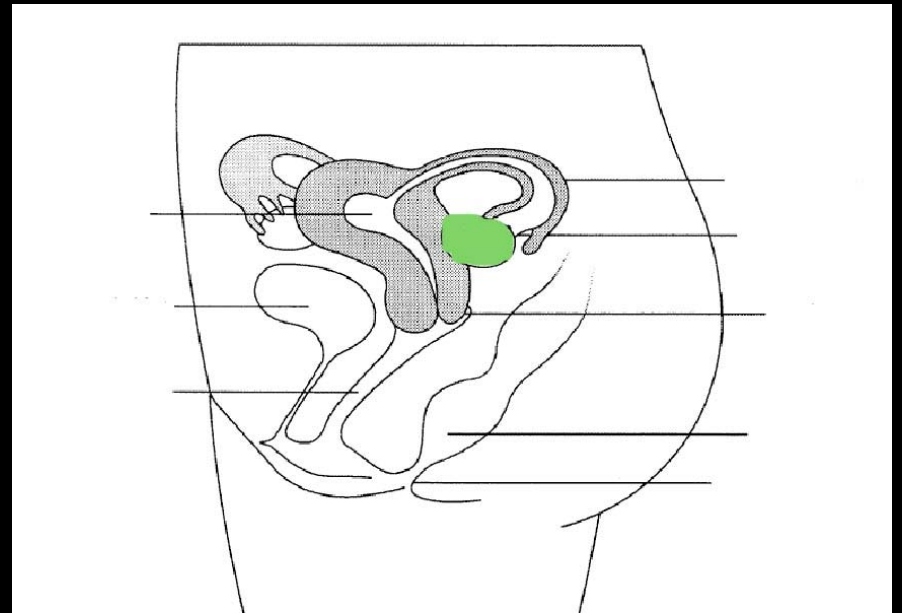


# Female Reproductive System

---

- 
- Ovary: female reproductive organ, produce ova (egg) & hormones estrogen, progesterone & relaxin



---

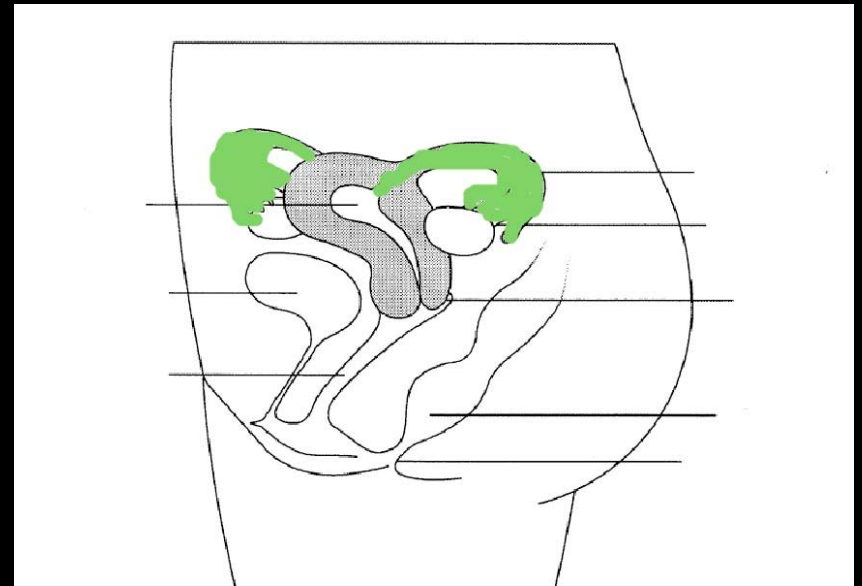
- FSH: Stimulates egg production

- LH stimulates ovulation & development of corpus luteum.

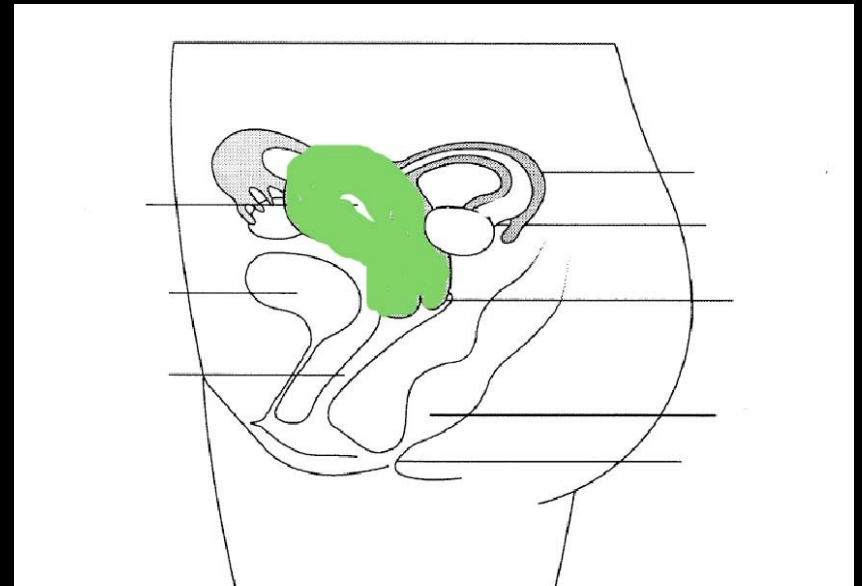
- 
- Oogenesis: formation of ovum (egg) in the ovary – before birth
    - Primary oocyte: diploid ( $2n$ ) - 46 chromosomes
    - Secondary oocyte: haploid ( $n$ ) – 23 chromosomes. Follicle – mature cell – other 3 are polar bodies.

- 
- Ovulation rupture of an ovarian follicle with release of a secondary oocyte into pelvic cavity – estrogen
  - Menstration: discharge of the endometrium if implantation of fertilized egg doesn't occur

- 
- Uterine (Fallopian) tube or Oviduct: duct that transports ova from the ovary to the uterus.

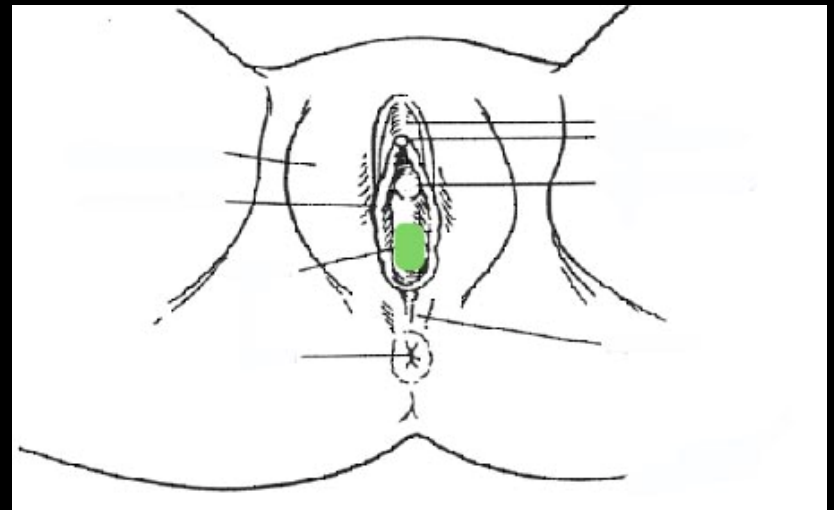
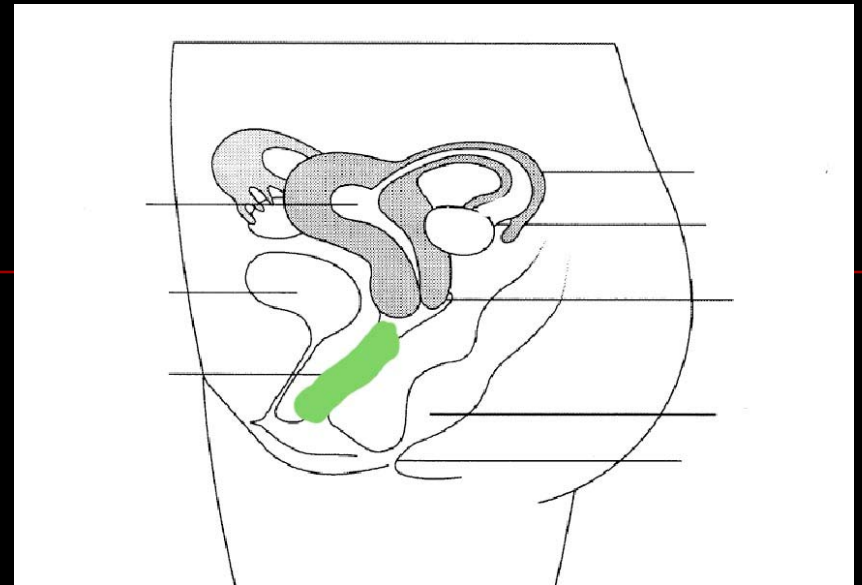


- 
- Uterus: (womb)  
hollow, muscular  
organ in females that  
is the site of  
menstruation,  
implantation,  
development of the  
fetus & labor

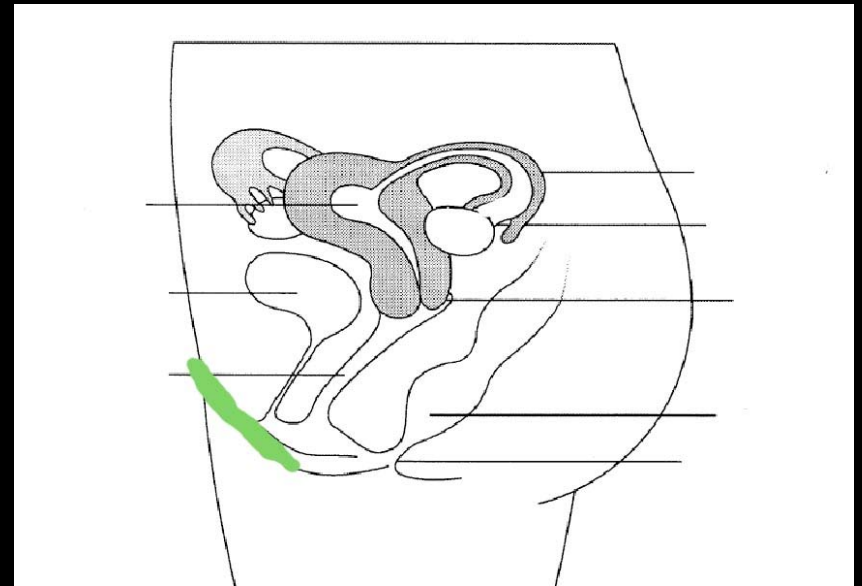


- 
- Cervix: narrow end of the uterus, which projects into the vagina.

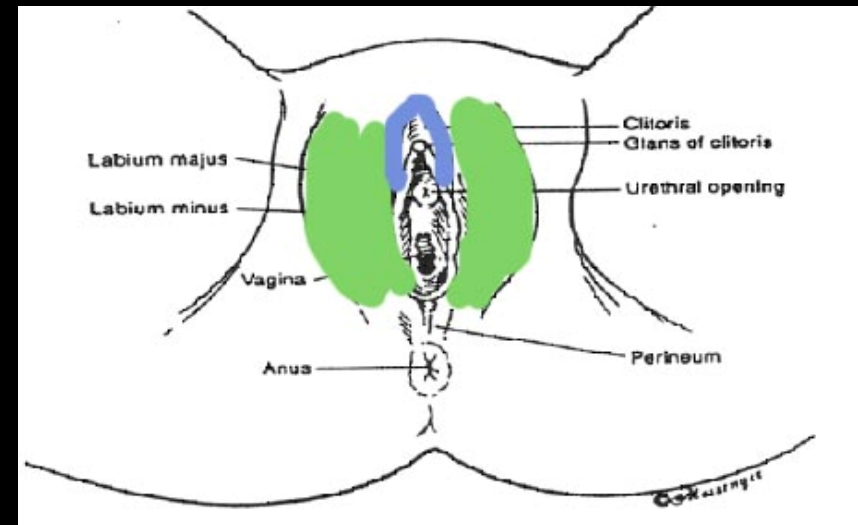
- Vagina: Passage way for menstrual flow & child birth. Also receives penis during sexual intercourse.



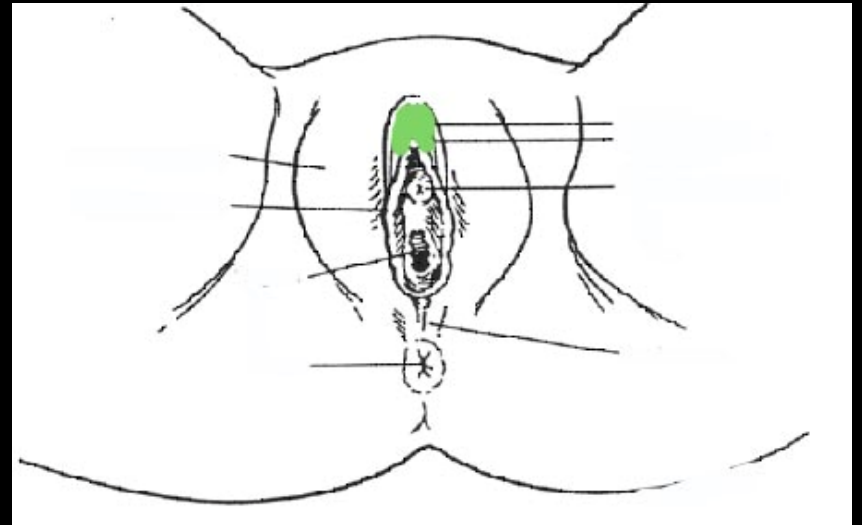
- 
- Mons pubis: elevation adipose tissue (fat) cover by pubic hair that cushions the pubic symphysis during intercourse



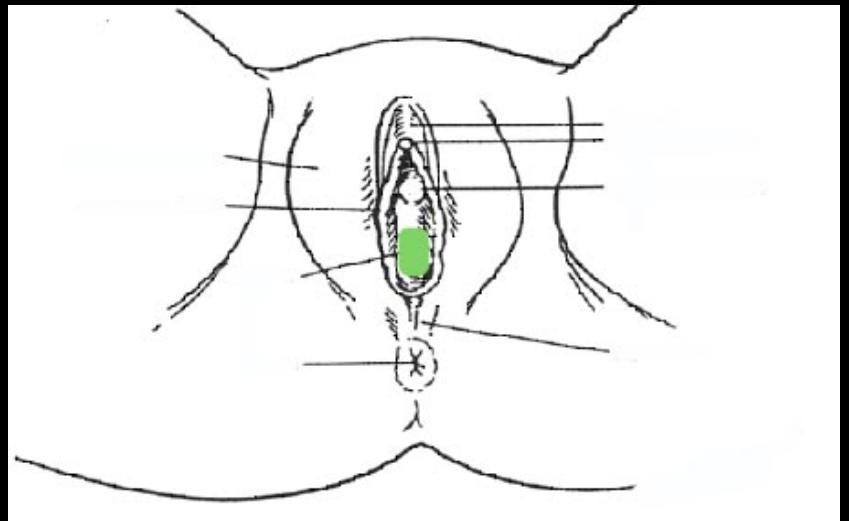
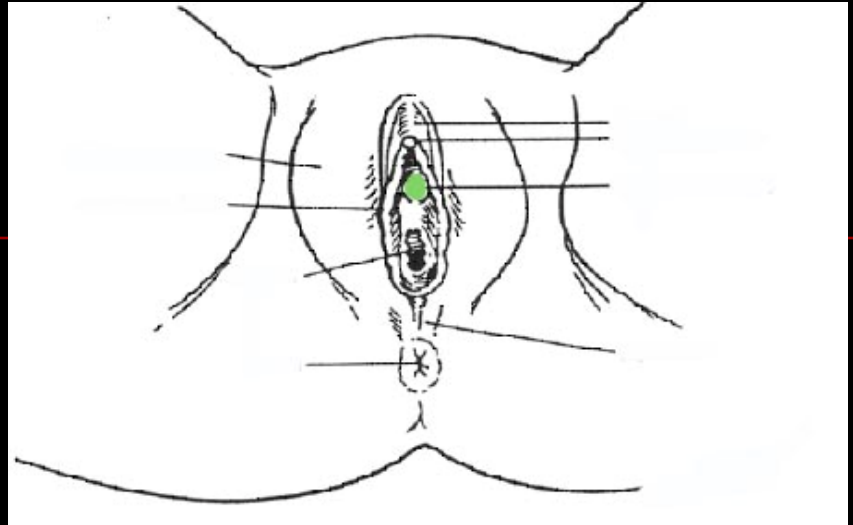
- Labia majora: exterior, folds made up of adipose tissue, oil & sweat glands & pubic hair
- Labia minor: smaller folds, no pubic hair, fat & few sweat glands. Many oil glands.



- 
- Clitoris: small mass of erectile tissue & nerves



- Urethra orifice:  
opening of urethra  
from urinary bladder  
to exterior
- Vaginal orifice:  
opening of vagina



- 
- Hyman: thin fold of vasailarized mucous membrane at the vaginal orifice.
  - Vestibular glands: produce mucous secretion during sexual intercourse

- 
- Perineal body: area between thighs & buttocks in males & females, contains external genitals& anus.