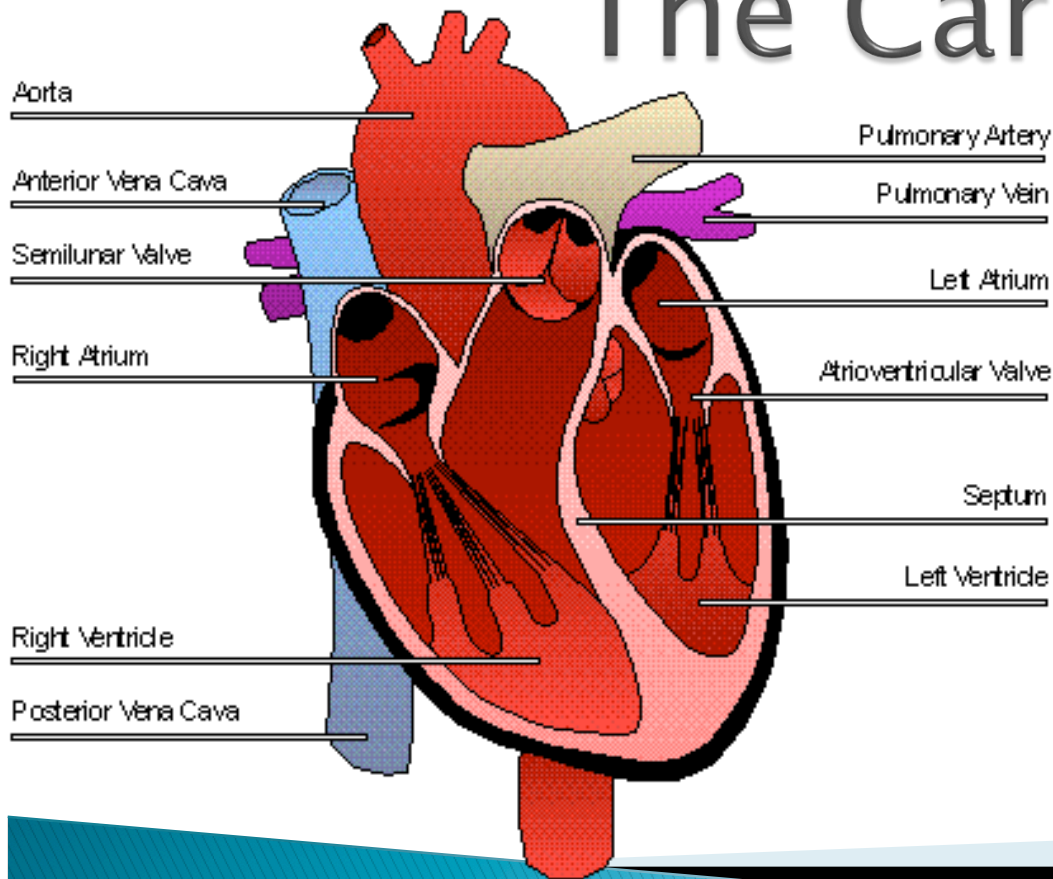


The Cardiovascular System



Heart: A muscular organ made of myocardium that pumps blood through the body

Myocardium: Involuntary smooth muscle of the heart

Right Atrium: Where oxygen-poor blood enters the heart.

Right Ventricle: Pumps Oxygen-poor blood to the lungs

In the capillaries of the lungs, blood absorbs oxygen and releases carbon dioxide.

Oxygen-rich blood travels to the left atrium. It then flows into the left ventricle.

Left Atrium: Where oxygen-rich blood from the lungs enters the heart.

Left Ventricle: Strongest part of the heart that pumps oxygen-rich blood to the entire body.

Aorta: Largest artery in the body. Distributes oxygen-rich blood to the body.

Aortic valve: tricuspid valve that lies between the aorta and the left ventricle

Mitral Valve: bicuspid valve that lies between the left ventricle and left atrium

Pulmonary Valve: semilunar valve that lies between the right ventricle and pulmonary artery

Tricuspid valve: lies between the right atrium and right ventricle

Apex: lowest part of the heart

Chordae Tendineae: “heart strings” cordlike tendons that connect the papillary muscles to the tricuspid and mitral valves

Papillary Muscles: in the ventricles of the heart, and connect to the tricuspid and mitral valves via the chordae tendineae

Pulmonary Trunk: arises from the right ventricle and splits into the right and left pulmonary arteries

Superior Vena Cava: Large vein that carries oxygen-poor blood from the **upper body** to the right atrium

Inferior Vena Cava: Large vein that carries oxygen-poor blood from the **lower body** to the right atrium

Pulmonary Artery: Carries oxygen-poor blood from the heart to the lungs.

It is the only artery that carries deoxygenated blood.

Pulmonary veins: Carry oxygen-rich blood from the lungs to the left atrium.

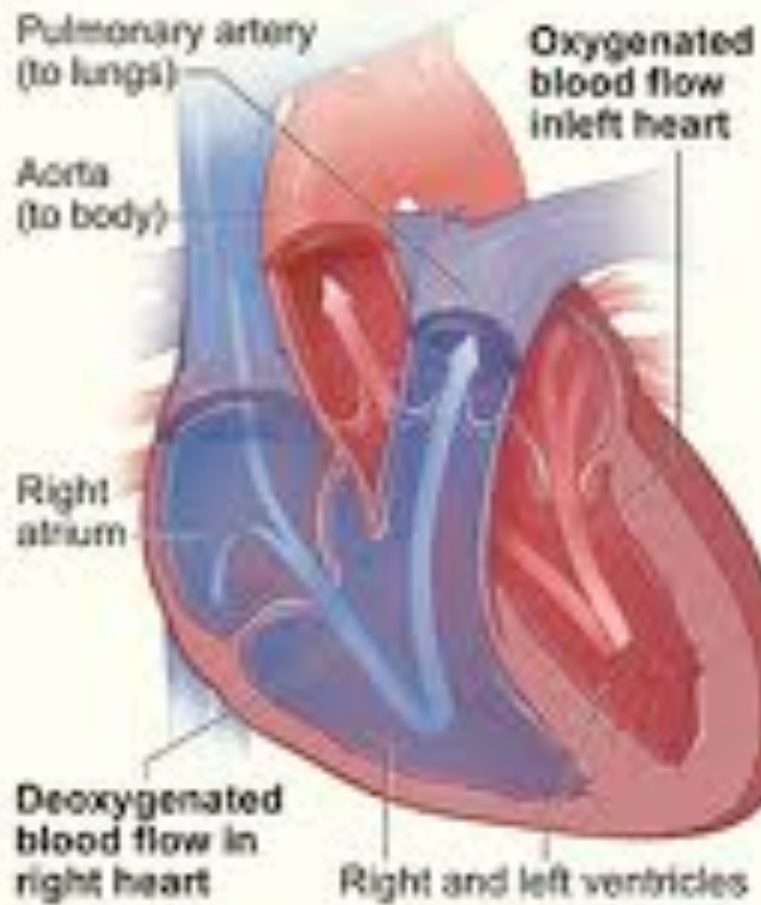
They are the only veins that carry oxygenated blood.

Septum: Separates the two sides of the heart

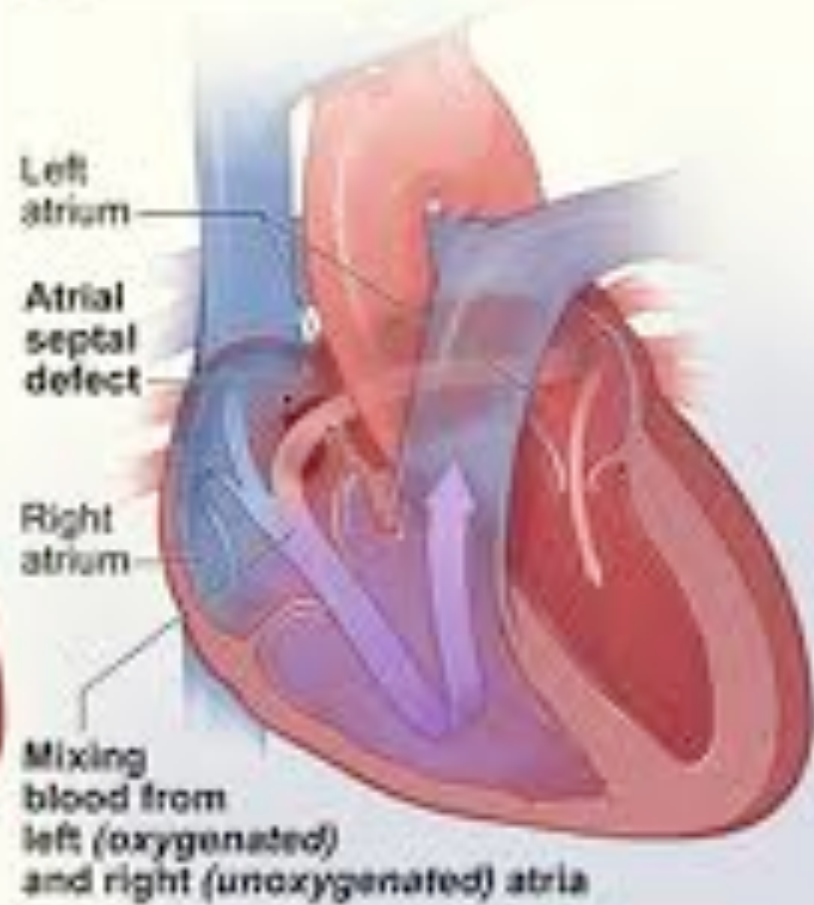
Atrial Septal Defect: “Hole in the heart” is a congenital defect that allows blood to flow between the atria.

Why would this be a problem?

A Normal heart



B Heart with atrial septal defect



Starter 1 / 11 / 11

© Original Artist
Reproduction rights obtainable from
www.CartoonStock.com



search ID: mbcn1388

"Is it just me or is it a bad idea to eat at a place that prints CPR instructions on their placemats?"

1. What message is the artist trying to get across in this cartoon?
2. Do think this is an accurate portrayal of most restaurants? Why or why not?
3. Does this make you think twice about your food choices? Why or why not?

Note: CPR is used when someone's heart stops, not when they choke.