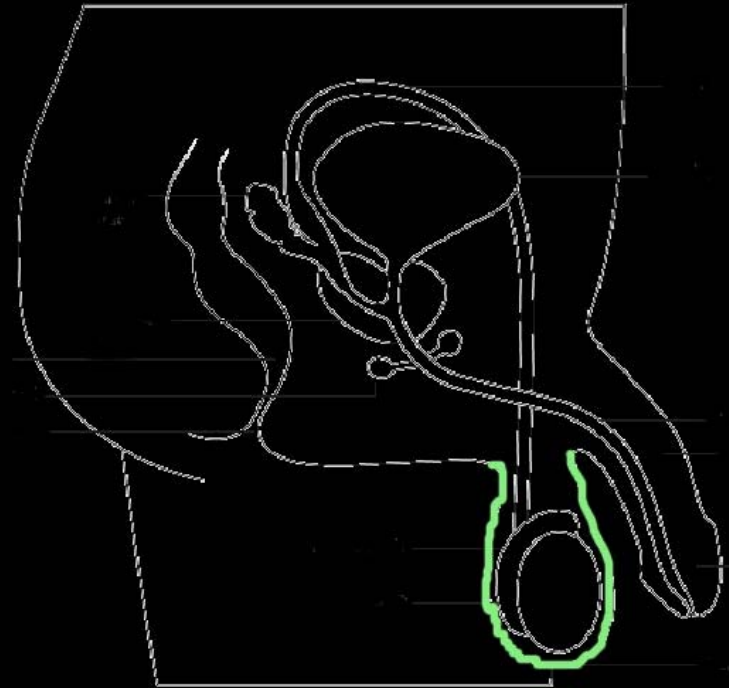
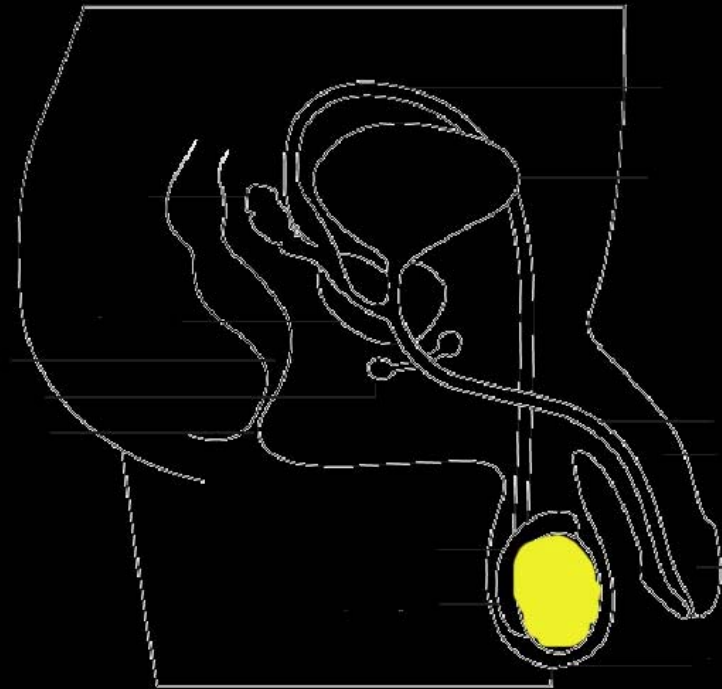


Male Reproductive System

-
- Scrotum: Pouch that supports the testes



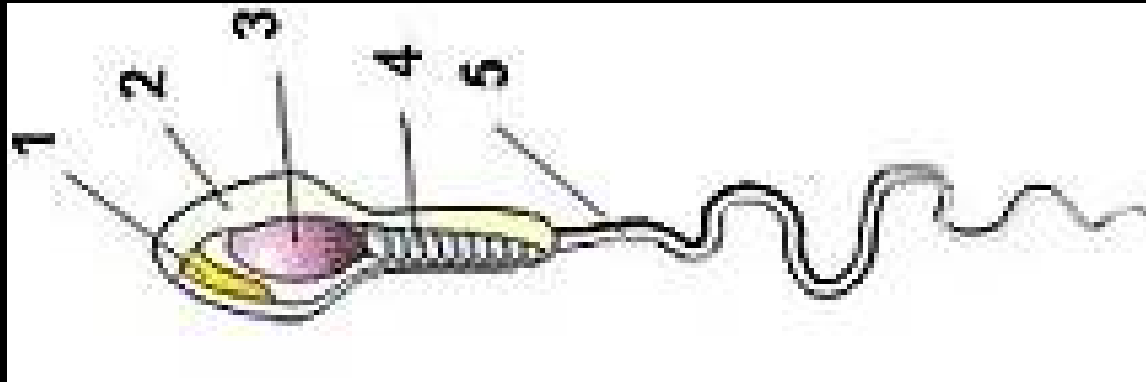
-
- Testes: Male gonad that produces sperm and the hormones testosterone and inhibin



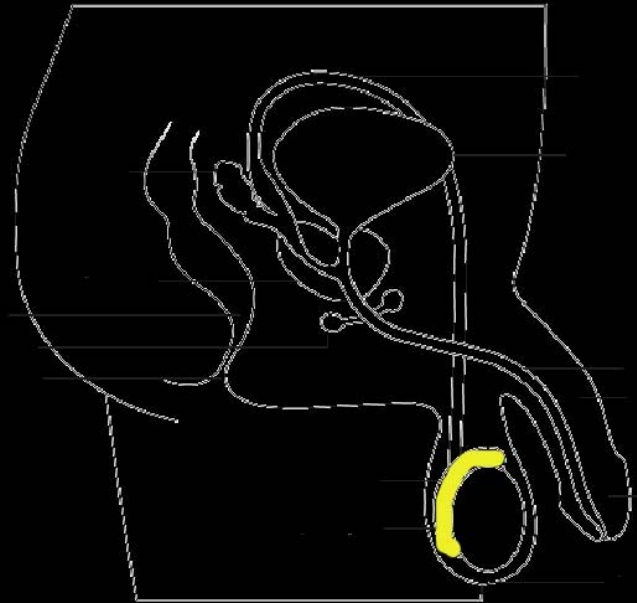
-
- Follicle Stimulation Hormone (FSH) and Luteinizing Hormone (LH): promotes the production of sperm in the seminiferous tubules.
 - Seminiferous tubule: tightly coiled duct located in the testes where sperm are produced.

-
- Spermatogenesis: production of sperm from spermatagonia (stem cells)
 - Primary spermatocytes: diploid ($2n$) – 46 chromosomes
 - Secondary spermatocytes: haploid (n) – 23 chromosomes

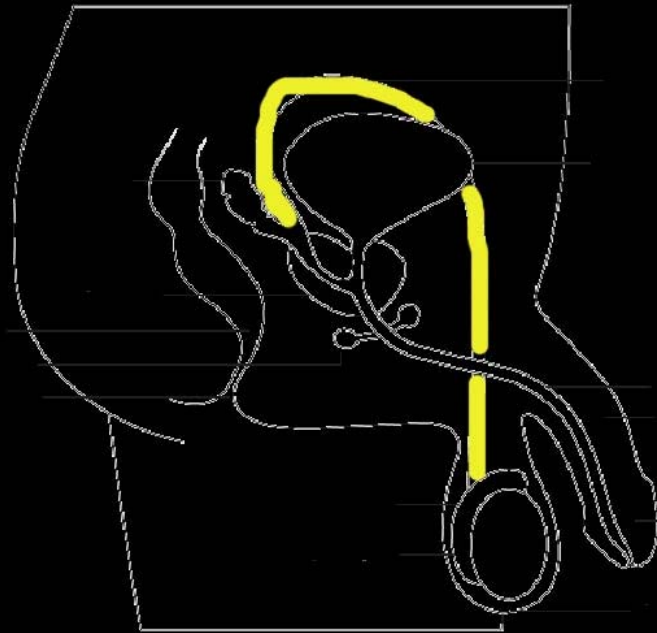
- Spermatozoa: mature sperm cell
 - Head: nuclear material & acrosome (to penetrate egg)
 - Midpiece: mitochondria for energy
 - Tail: propel sperm to egg



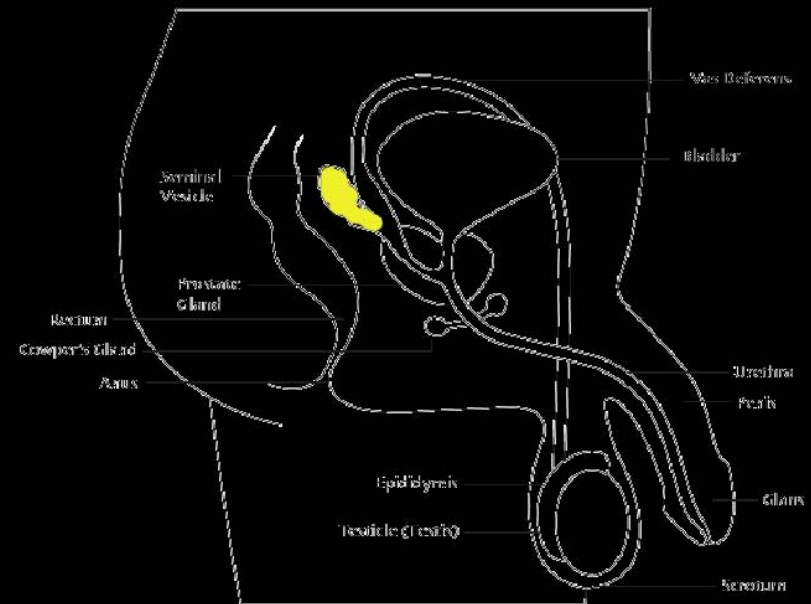
-
- Epididymis: maturation area for sperm



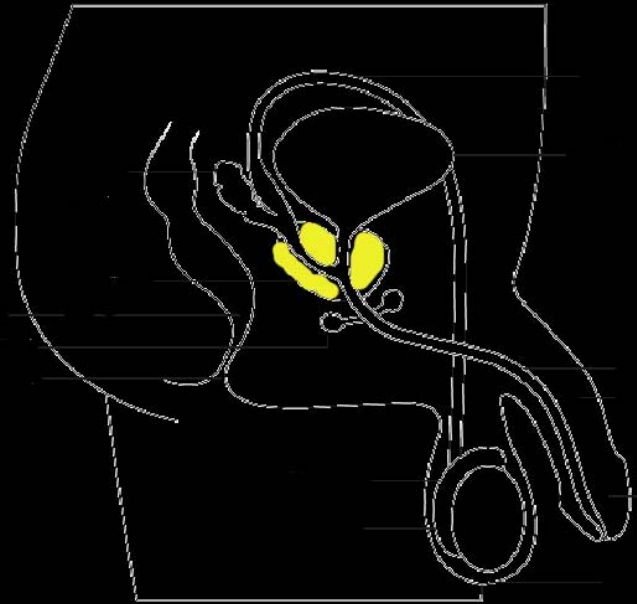
-
- Ductus (vas) deferens:
Duct that conducts sperm from epididymis to ejaculatory duct.



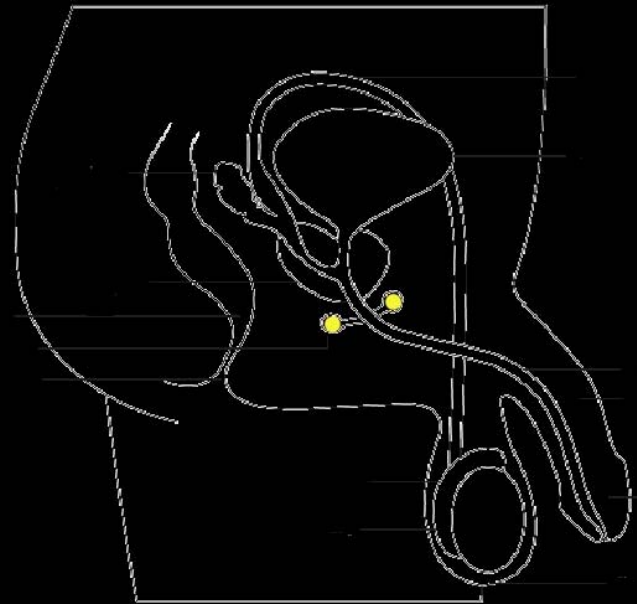
- Seminal vesicle:
Pouch-like structure
that secretes an
alkaline fluid (against
female acid) – 60% of
semen comes from
seminal vesicle



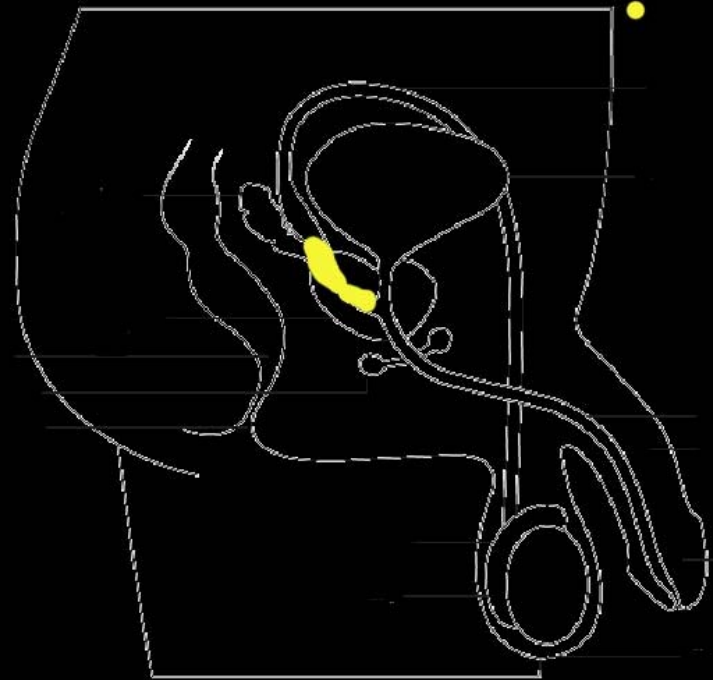
-
- Prostate gland: doughnut shaped gland, secretes a slightly base solution that contributes to sperm motility & viability, 25% of semen



-
- Bulbourethral (Cowper's) gland: secretes alkaline substance & mucus that lubricates the penis.



-
- Ejaculatory duct:
Ejects sperm into
urethra



-
- Urethra: duct from urinary bladder to exterior contains urine and semen
 - Penis: male copulatory organ used to introduce sperm into female vagina

