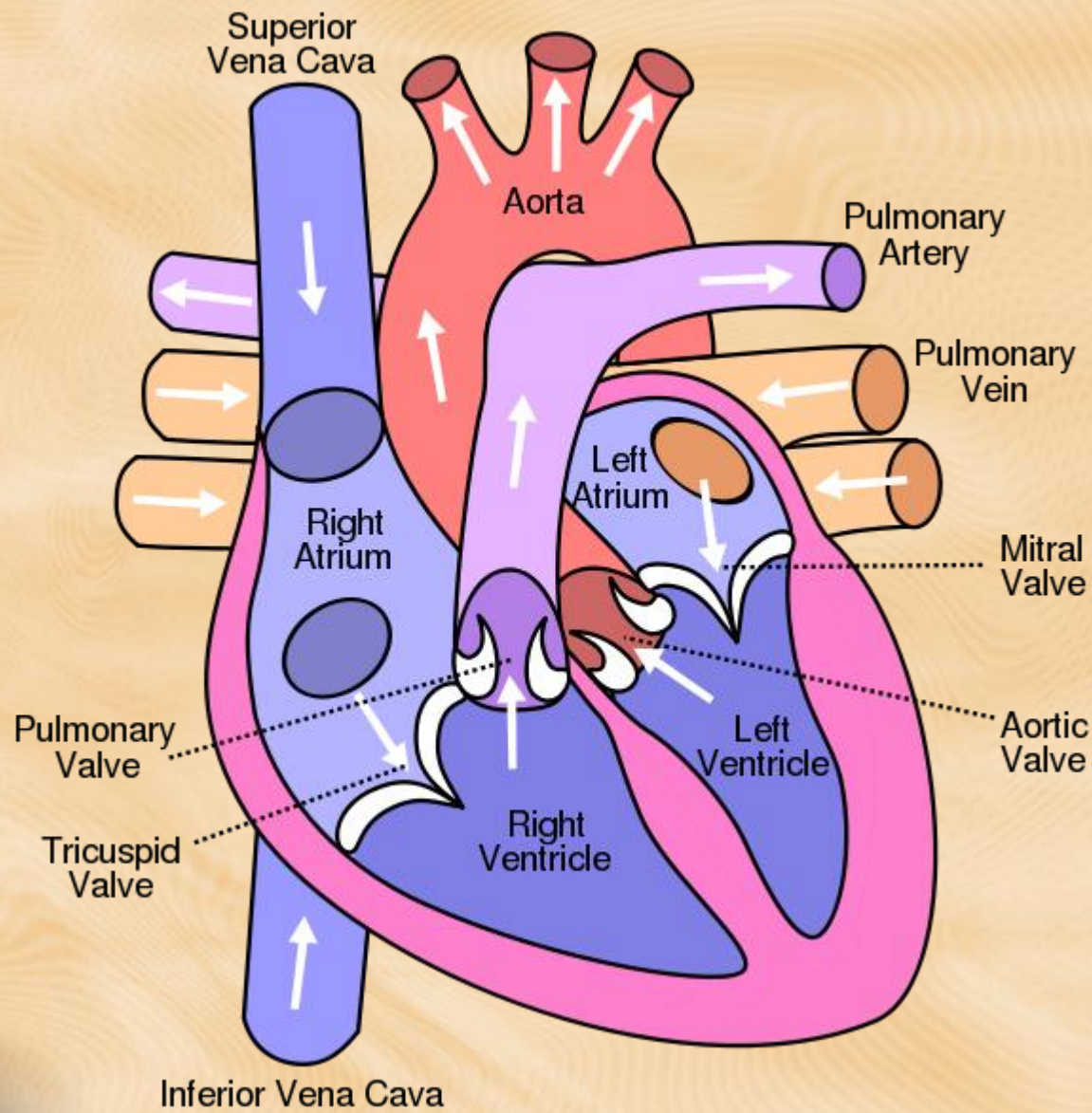


The Heart



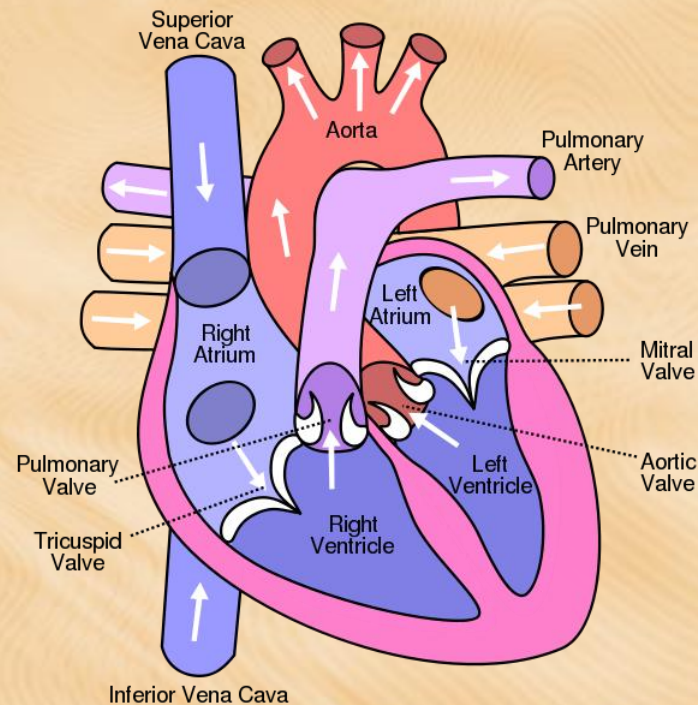


- “cone” shaped – point at the base is called the “apex”
- Size of a clenched fist about 11 oz.
- Located in the middle of your chest, slightly tilted so that the apex swings to the left
- Heart muscle is called “myocardium”
- Pericardium –protective “fluid filled” (serous) membrane that surrounds heart
- Septum divides the heart from the left and the right side.



Four Chambers of the heart

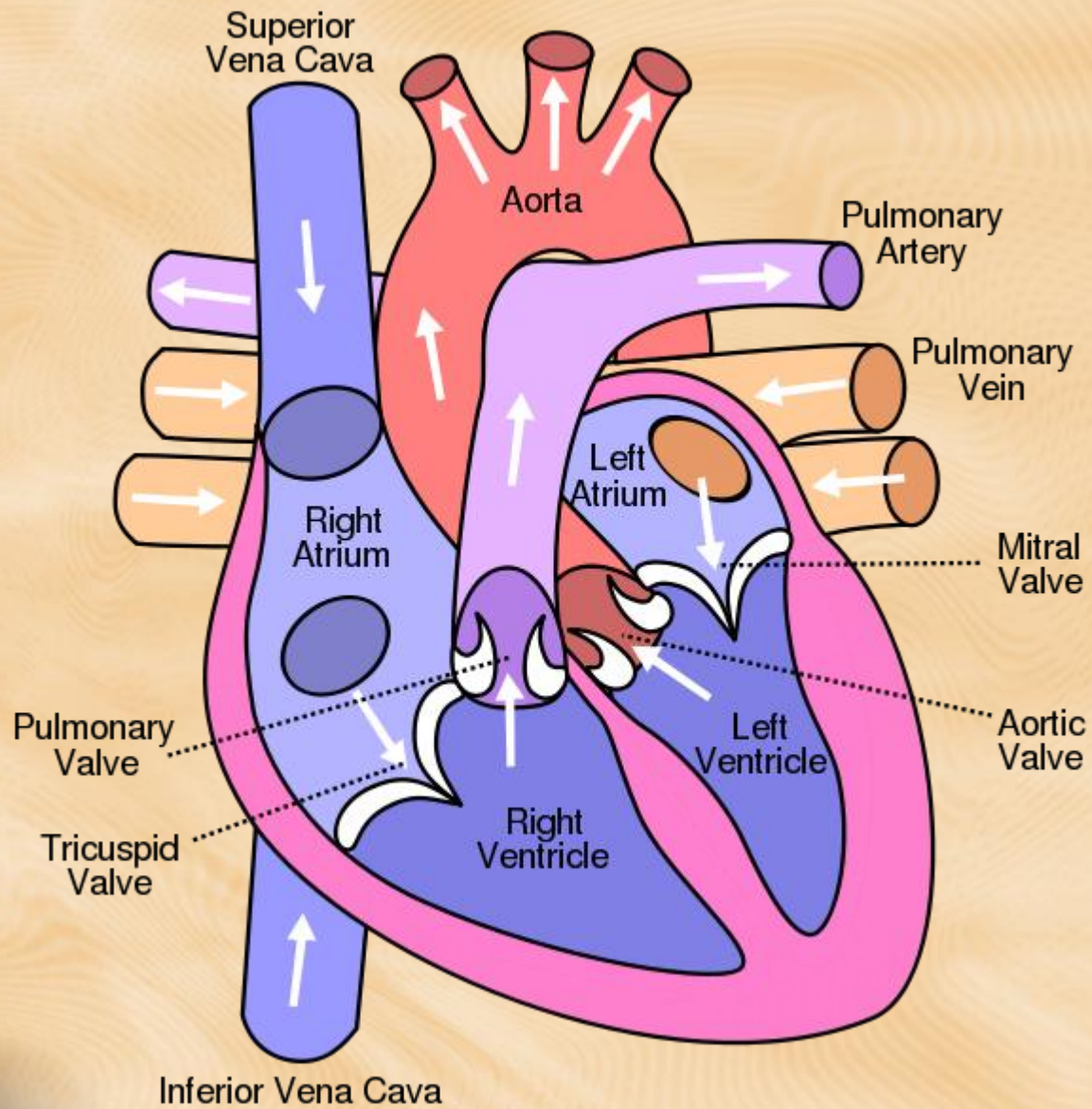
- Atrium – two, upper, smaller, thinner walled
- Ventricles – two lower, larger, thicker walled



Valves

- Direct the flow of the blood
- **Atrioventricular** (between atrium & ventricle)
 - Right AV valve called the “**tricuspid**” valve
 - Left AV valve called the “bicuspid” or “**mitral**” valve
 - Chordae tendinae – fibrous strings which support these valves and prevent them from inverting.
- **Semilunar** (between ventricles & attached vessel)
 - Pulmonary Semilunar Valve (leading to lungs)
 - Aortic Semilunar Valve (leading to body)





Arteries

- Carry blood **away** from the heart
- Thick walls – to withstand pressure coming from heart
 - Muscular to constrict & dilate
- Small arteries call “arterioles” branch into capillaries



Veins

- Return blood to heart
- Much thinner than arteries
- Need valves to control flow of blood, prevents back flow
- Movement of venous blood due to skeletal movement & respiration
- Small veins coming from capillary beds are called “venules”



